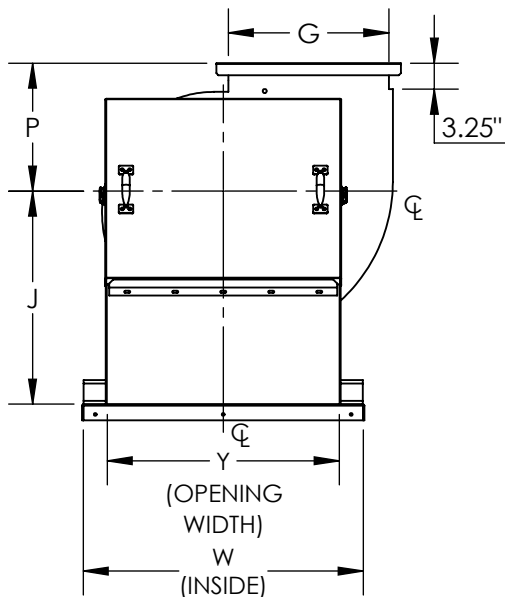
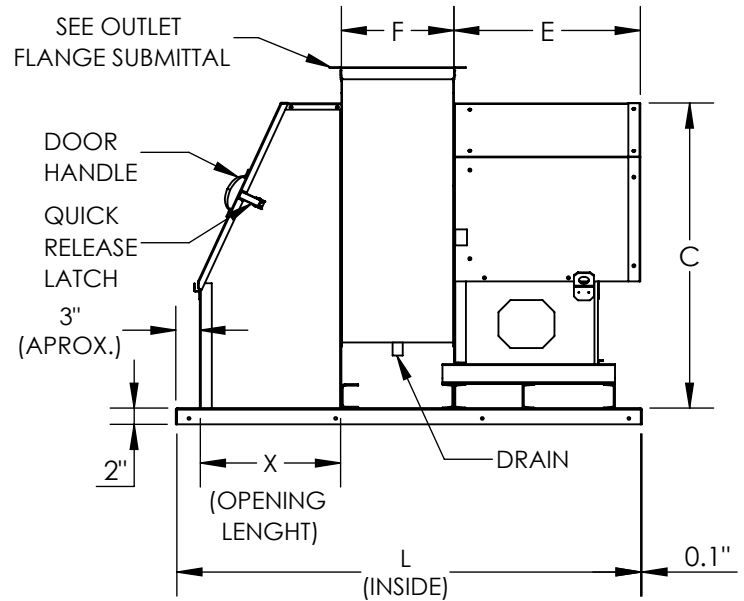


UVS2, CLASS-2, ARRANGEMENT- 4
 INLET BOX AND CURB CAP FOR UL SMOKE CONTROL SYSTEMS, SIZES 122-270



INLET VIEW



DRIVE SIDE VIEW

STANDARD CONSTRUCTION:

1. Discharge: UB
2. Rotation: CW/CCW (CW shown above)
3. Steel Wheel
4. Welded and Coated Housing and Pedestal
5. Welded and Coated Inlet Box and Curb Cap
6. Weather Cover
7. Flanged Outlet
8. Shaft Seal (Ceramic)
9. Motor Heat Shield

OPTIONAL ACCESSORIES:

1. Speed Controllers (shipped loose only)
2. Curb
3. Pre-wired switch NEMA 3R
4. Outlet Stack
5. Access Door (Bolted or Hinged)
6. Flanged Outlet
7. Housing drain 3/4" NPT
8. High Temperature Paint

DIMENSIONAL DATA

SIZE	C	E	"F" (WIDTH)										
			100%	95%	90%	85%	80%	75%	70%	65%	60%	55%	50%
122	29.38	18.75	9.88	9.75	9.56	9.44	9.25	9.06	-	-	-	-	-
135	30.25	18.75	10.88	10.75	10.56	10.38	10.19	10	9.81	-	-	-	-
150	32.63	18.75	12.06	11.88	11.69	11.5	11.31	11.06	10.88	10.69	10.5	-	-
165	35.13	23.31	13.25	13.06	12.81	12.63	12.44	12.19	11.94	11.75	11.5	11.31	-
182	38.13	23.31	14.06	13.88	13.63	13.38	13.09	12.88	12.63	12.38	12.13	11.88	11.63
200	41.50	23.31	15.38	15.13	14.88	14.63	14.38	14.13	13.88	13.5	13.25	13	12.75
222	45.06	23.31	17.13	16.88	16.63	16.25	16.00	15.75	15.38	15.13	14.75	14.5	14.13
245	48.50	25.75	18.75	18.50	18.13	17.88	17.50	17.13	16.88	16.5	16.13	15.88	15.63
270	52.63	28.63	20.63	20.38	20	19.63	19.38	18.88	18.5	18.13	17.75	17.38	17.13

DIMENSIONAL TABLE CONTINUED ON NEXT PAGE...

NOTES:

ALL DIMENSIONS ARE IN INCHES, WEIGHTS ARE APPROXIMATE AND DOES NOT INCLUDE DRIVES OR ACCESSORIES.



DATE:

TAG:

JOB:

PROJECT:

COMPANY:

SALES PERSON:

UVS2, CLASS-2, ARRANGEMENT- 4
INLET BOX AND CURB CAP, SIZES 122-270

DIMENSIONAL DATA

SIZE	J	L	P	W	X	Y	MAX. WT. (lbs)	MAX. RPM	MAX. MTR
122	21.00	45.00	13.50	25.00	13.00	19.00	257	4650	184T
135	21.38	46.00	14.25	28.00	13.00	22.00	284	4300	215T
150	23.00	47.00	14.75	30.00	13.00	24.00	316	3850	215T
165	24.63	56.00	15.50	33.00	16.00	27.00	394	3500	256T
182	26.63	58.00	16.00	35.00	17.50	29.00	450	3000	256T
200	28.75	63.00	17.25	38.00	20.50	32.00	536	2750	256T
222	31.25	66.00	18.75	42.00	22.00	36.00	624	2450	256T
245	33.75	70.00	20.25	45.00	24.00	39.00	702	2200	286T
270	36.75	72.00	22.25	48.00	22.50	42.00	810	2000	324T

NOTES:

ALL DIMENSIONS ARE IN INCHES, WEIGHTS ARE APPROXIMATE AND DOES NOT INCLUDE DRIVES OR ACCESSORIES.

REVISION:

FORM:

REPLACES: